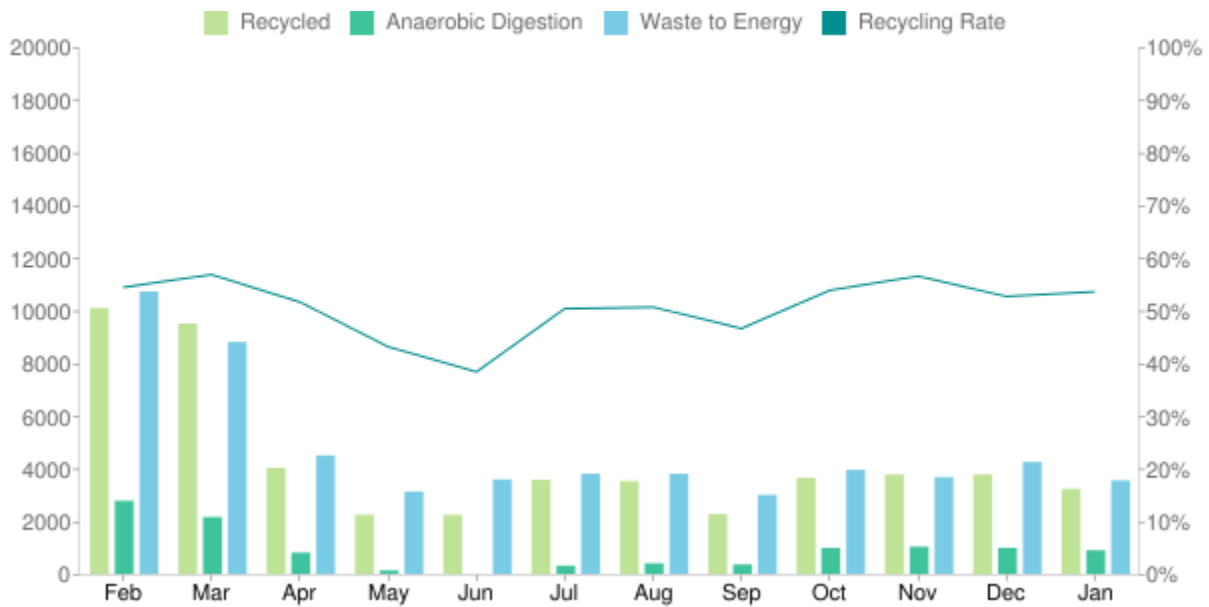


Material collected (kgs)

FROM FEBRUARY 2020 TO JANUARY 2021



Feb	Mar	Apr	May	Jun	Jul	Aug	Sep	Oct	Nov	Dec	Jan	Total
10,095	9,505	4,025	2,250	2,250	3,575	3,525	2,275	3,650	3,775	3,775	3,225	51,925
2,778	2,160	810	135	0	315	405	360	990	1,035	990	900	10,878
10,720	8,805	4,500	3,125	3,589	3,807	3,803	3,000	3,950	3,675	4,250	3,550	56,774
55%	57%	52%	43%	39%	51%	51%	47%	54%	57%	53%	54%	53%

Material recycled

FROM FEBRUARY 2020 TO JANUARY 2021

CARDBOARD

0 kg

JUNK REMOVAL

900 kg

COFFEE GROUNDS

0 kg

MIXED RECYCLING

42,950 kg

FOOD RECYCLING

10,877 kg

PAPER SHREDDING

2,300 kg

GENERAL WASTE

56,174 kg

WEEE AND TONER

275 kg

GLASS

5,500 kg

Key statistics

	THIS MONTH	PAST 12 MONTHS
TREES SAVED:	35	508
CO2 TONNES SAVED:	4	62
KWH ENERGY PRODUCED:	2,158	33,675
RECYCLING RATE:	54%	53%