



## UPSKILLING TRAINING

As we dive into the first few months of 2026, we're excited to bring you an inspiring line-up of events designed to inform, upskill, and connect our Stratford business community. Whether you're curious about the transformative potential of technology or looking to boost essential workplace skills, our programme has something for everyone. Below, you'll find a snapshot of two major strands in our upcoming schedule — a special AI Seminar and two Training Sessions — offering to engage, learn, and grow together.

### AI Seminar — Hybrid: In Person & Online

Kicking off our events calendar on 25th February (11:00–12:30), we're delighted to invite you to our AI Seminar, available both in person and online. Organised by Stratford Original BID in partnership with the Mary Ward Centre, this session is specifically tailored for micro and small businesses seeking a practical introduction to Artificial Intelligence. Far from abstract theory, this seminar explores AI's real impact on today's business landscape, including essential ethical considerations, time-saving opportunities, and demonstrable tools that can be used straight away.

Whether you choose to attend at the venue or tune in from your desk, this session promises to demystify AI and show how it can elevate customer experiences, streamline operations, and be a genuine asset to your business strategy.

### Training Programme

On 18th March 2026, our Training Programme returns with two valuable sessions delivered at the Mary Ward Centre (275-285 High Street, Stratford).

First Aid Training runs from 09:30–17:30, covering essential life-saving techniques such as managing unresponsiveness, seizures, choking, and bleeding.

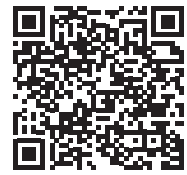
Food Hygiene Training runs from 09:30–17:00, focusing on critical food safety principles, hazard control, personal hygiene, effective cleaning routines, pest control awareness, and safe food handling practices.

To find out more and register please visit our website ([www.stratfordoriginal.com](http://www.stratfordoriginal.com)) or email us via [info@stratfordoriginal.com](mailto:info@stratfordoriginal.com).

# EXPLORE STRATFORD MAP

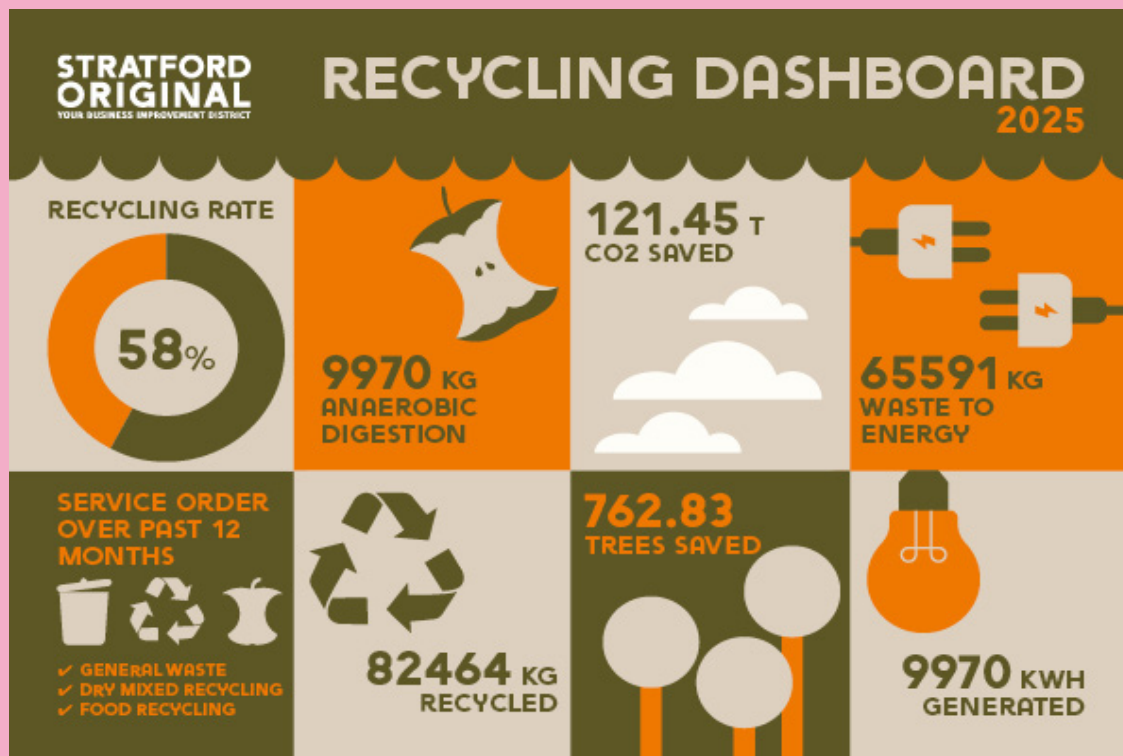
New prints of our maps have arrived in our office. If you think your business could benefit from having some pocket size maps for client engagement, do get in touch by emailing us at [info@stratfordoriginal.com](mailto:info@stratfordoriginal.com) or ask our ambassador Michael at his next visit.

Alternatively, you can access a digital copy of the map following our link here:



## ANNUAL RECYCLING STATS

Working with First Mile, here are the annual savings we have achieved with our businesses who have joined the service. This year we will be reviewing the services, aiming to increase the number of participatory businesses and positive impact we make.



5<sup>TH</sup> FEBRUARY

BI-WEEKLY  
INTEL BRIEFING

Stratford Centre  
11.30am - 11.40am

19<sup>TH</sup> FEBRUARY

BI-WEEKLY  
INTEL BRIEFING

Stratford Centre  
11.30am - 11.40am

25<sup>TH</sup> FEBRUARY

AI SEMINAR

Us & Co  
11am - 12.30pm

# BE PART OF A NEW CHAPTER FOR DISCOVER CHILDREN'S STORY CENTRE

From the end of February, Discover Children's Story Centre, the children's centre and charity based on Stratford High Street, will be temporarily closing to undertake some transformative building work. As part of its Up and Out building development project, Discover will be greening and growing with works designed to improve sustainability and accessibility. Discover has worked with award-winning architects, Jan Kattein, to create unique, innovative and beautifully designed spaces. Discover will reopen in mid- to late-May. In the meantime, Discover will be operating a pop-up space in the Stratford Centre.

Discover's Up and Out building development project will increase its footfall and improve its visibility, with a new front-facing café, bookshop and play spaces. The project will extend Discover's mission to support local families through affordable, inclusive access to safe spaces to play, learn and be active.

Thanks to support from local businesses, one in ten audience members experiences Discover for free. Now, Discover needs your help to make sure local families can enjoy these brand new spaces and opportunities.



Until March 31st, any donations made to Discover will be doubled through match funding.

If you are interested in supporting the next chapter of Discover's work with the community, please email [fundraising@discover.org.uk](mailto:fundraising@discover.org.uk). The charity is extremely grateful for the support it has received from local businesses and hopes this important work can continue.

For more information please visit Discover's website.

## SAFER STRATFORD BCRP

The first Intelligence Briefing we held was on the 8th of January 2026 with attendance from security, business and met police in the Stratford Shopping Centre.

We're discussing the latest intelligence trends since December and any emerging crime trends in the upcoming new year.

These intelligence briefings will go ahead bi-weekly for the local business community again this year ensuring everyone stays up to date.



# AMBASSADOR REPORT JANUARY 2026

**Shift Coverage:** Across the week, patrols were maintained daily from 10:00–18:00, covering Stratford Shopping Centre, Broadway, High Street, Meridian Square, and the wider BID area in both AM and PM rounds.

**Patrols:** Consistent high-visibility patrols across key hotspots and continued engagement with businesses and members throughout the BID footprint.

**Street Issues Reported:** Multiple litter hotspots identified and reported for action across shifts. Several fly-tipping sites were logged, with some cleared promptly and others monitored for follow-up.

**Public Assistance:** Assisted members of the public with wayfinding, including directions to Stratford Station and support in Meridian Square.

**Business Engagement:** Ongoing business engagement and flyer distribution, including: Post Office, Superdrug, 012 Bar & Grill,



Pizza Express, Holiday Inn, Market Village, Poundstretcher, Yotel Pad, and Stratford Shopping Centre. BID Training Flyers were delivered across Broadway and West Ham Lane and to multiple local businesses.

**Key Updates/Follow-Up:** Previous fly-tipping locations confirmed cleared, with new sites logged for monitoring.

Continued monitoring planned for litter build-up and fly-tipping hotspots on upcoming shifts.

## OUR AMBASSADOR STATS

56

MEMBERS OF THE  
PUBLIC ENGAGED

109

MILES COVERED

78

ISSUES REPORTED  
THROUGH THE LOVE  
NEWHAM APP

**STRATFORD  
ORIGINAL**  
YOUR BUSINESS IMPROVEMENT DISTRICT



020 8555 7065



stratfordoriginal.com



c/o. Us&Co, 11 Burford Rd Centre, Stratford, London E15 1ST



info@stratfordoriginal.com



StratfordOrig

